



*Conferenza transfrontaliera*

# Stima dei fabbisogni irrigui delle colture in Valle d'Aosta

Francesco Avanzi (Fondazione CIMA)  
Edoardo Cremonese (ARPA Valle d'Aosta)

*Aosta, 16 dicembre 2022*



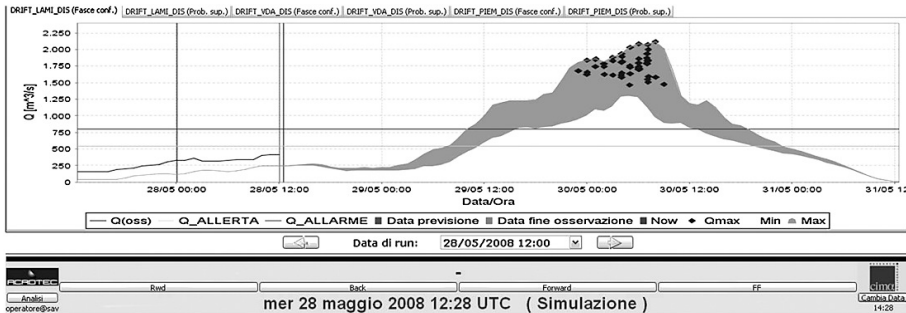
RESERVAQUA

# Contesto

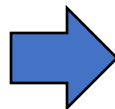
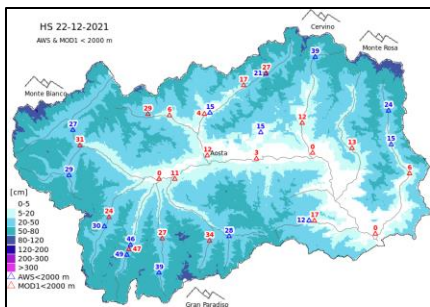
2005



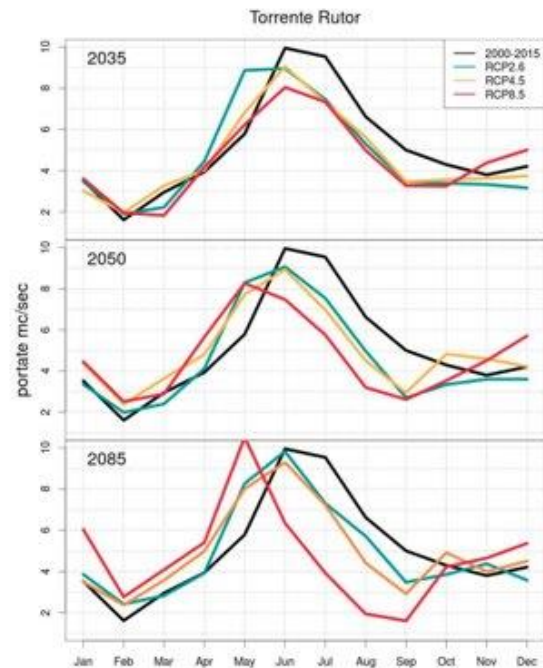
**CVA**



2012



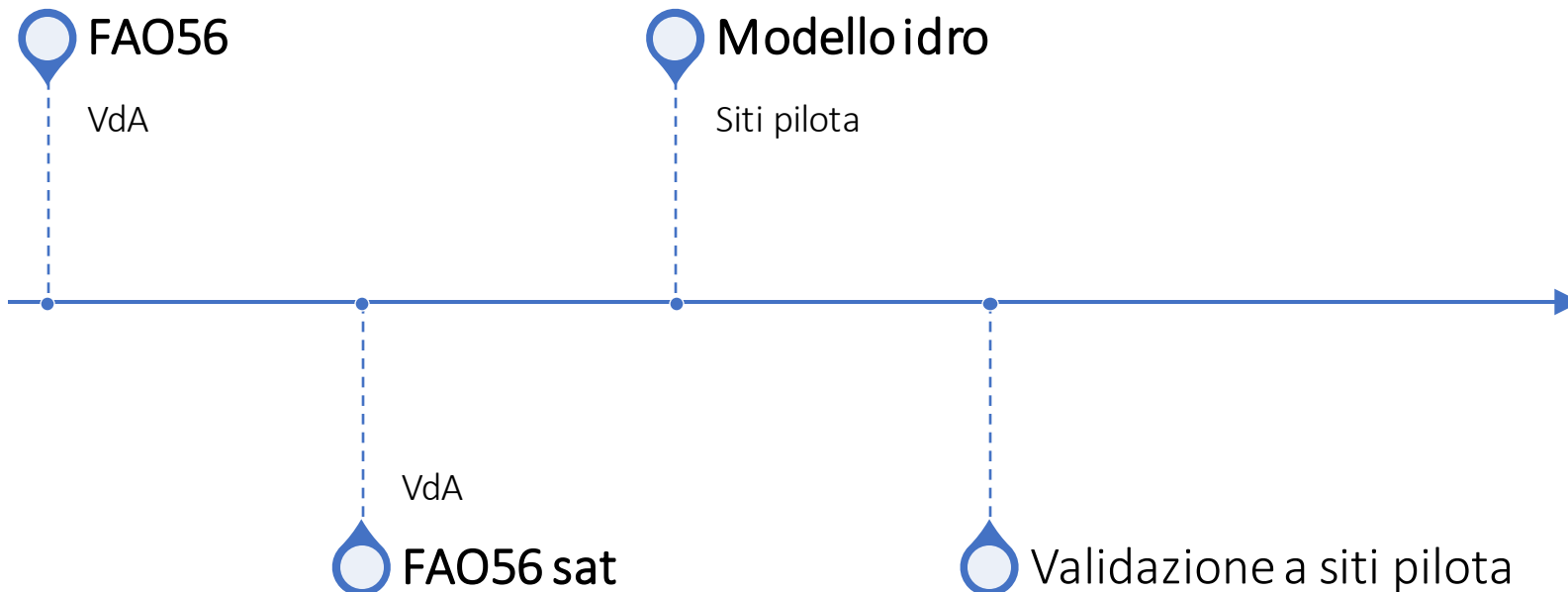
2019...





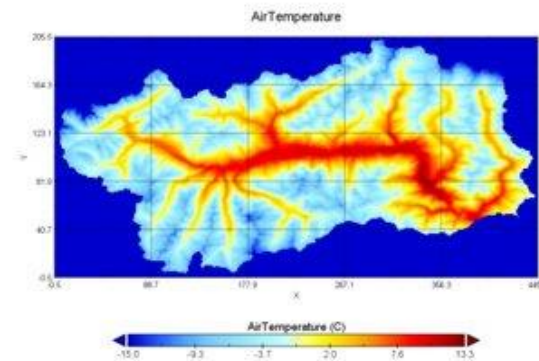
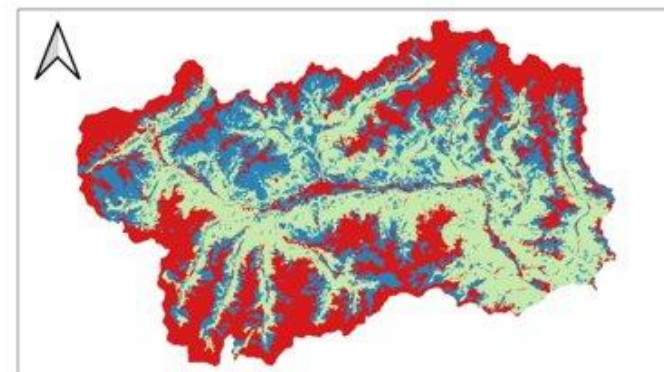
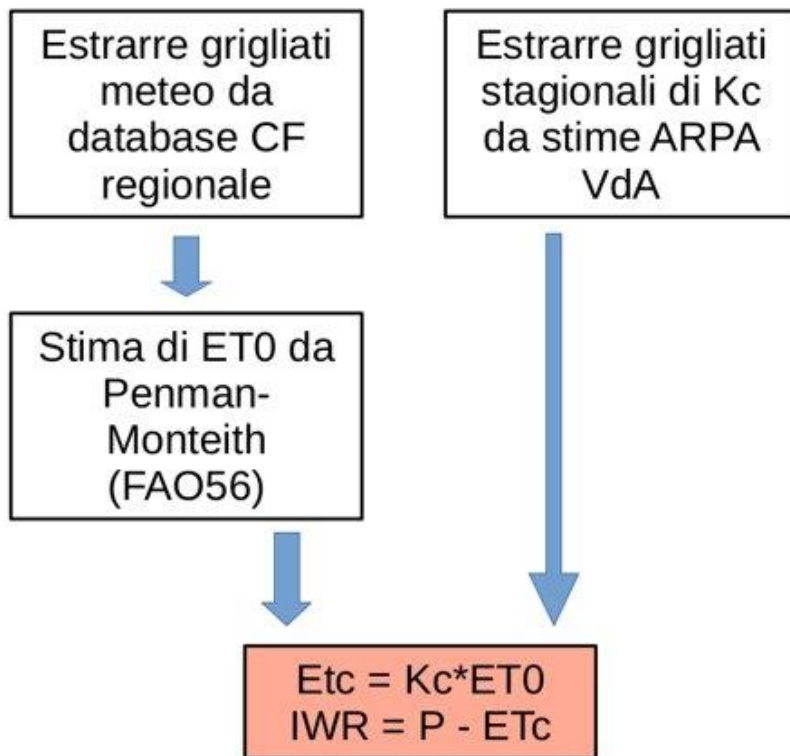
# Obiettivo

Condurre un confronto tra diversi metodi disponibili per la stima del fabbisogno irriguo colturale





# Metodo FAO56

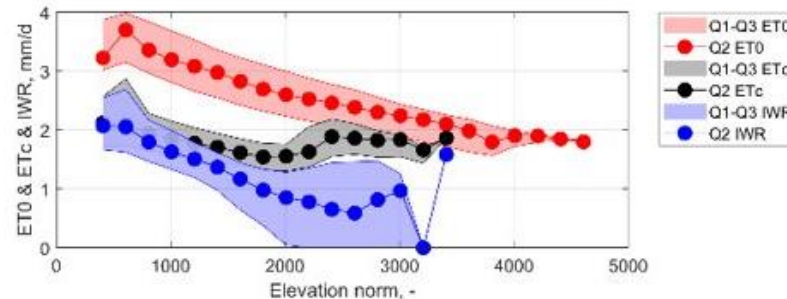
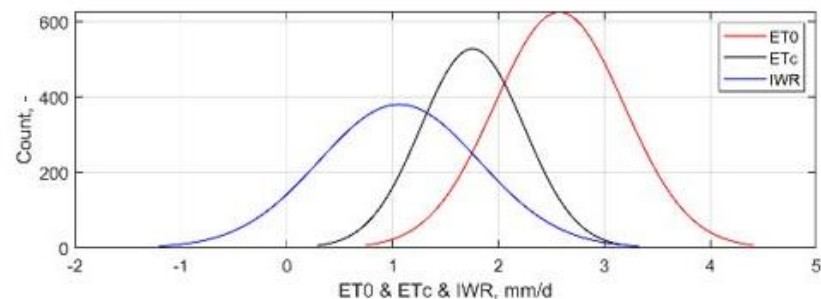
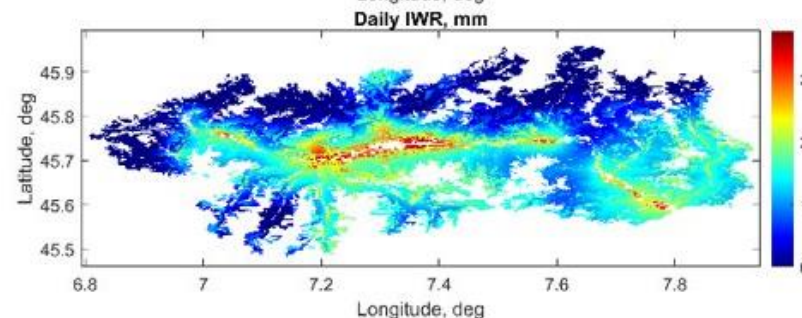
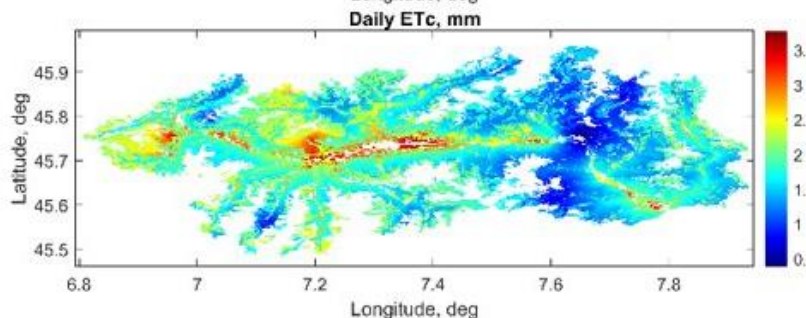
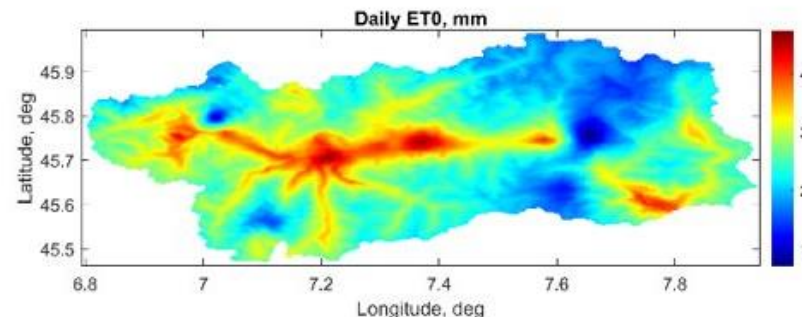
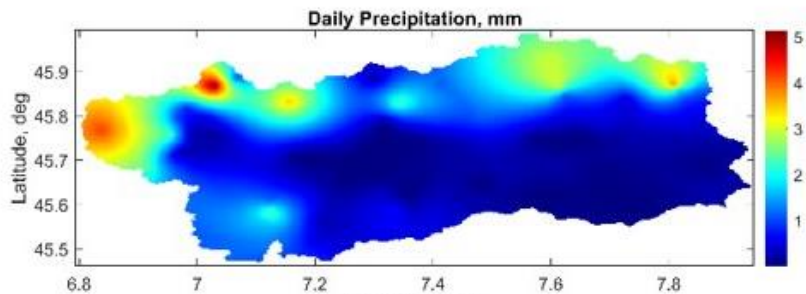




RESERVAQUA

# Metodo FAO56

15/07/2018



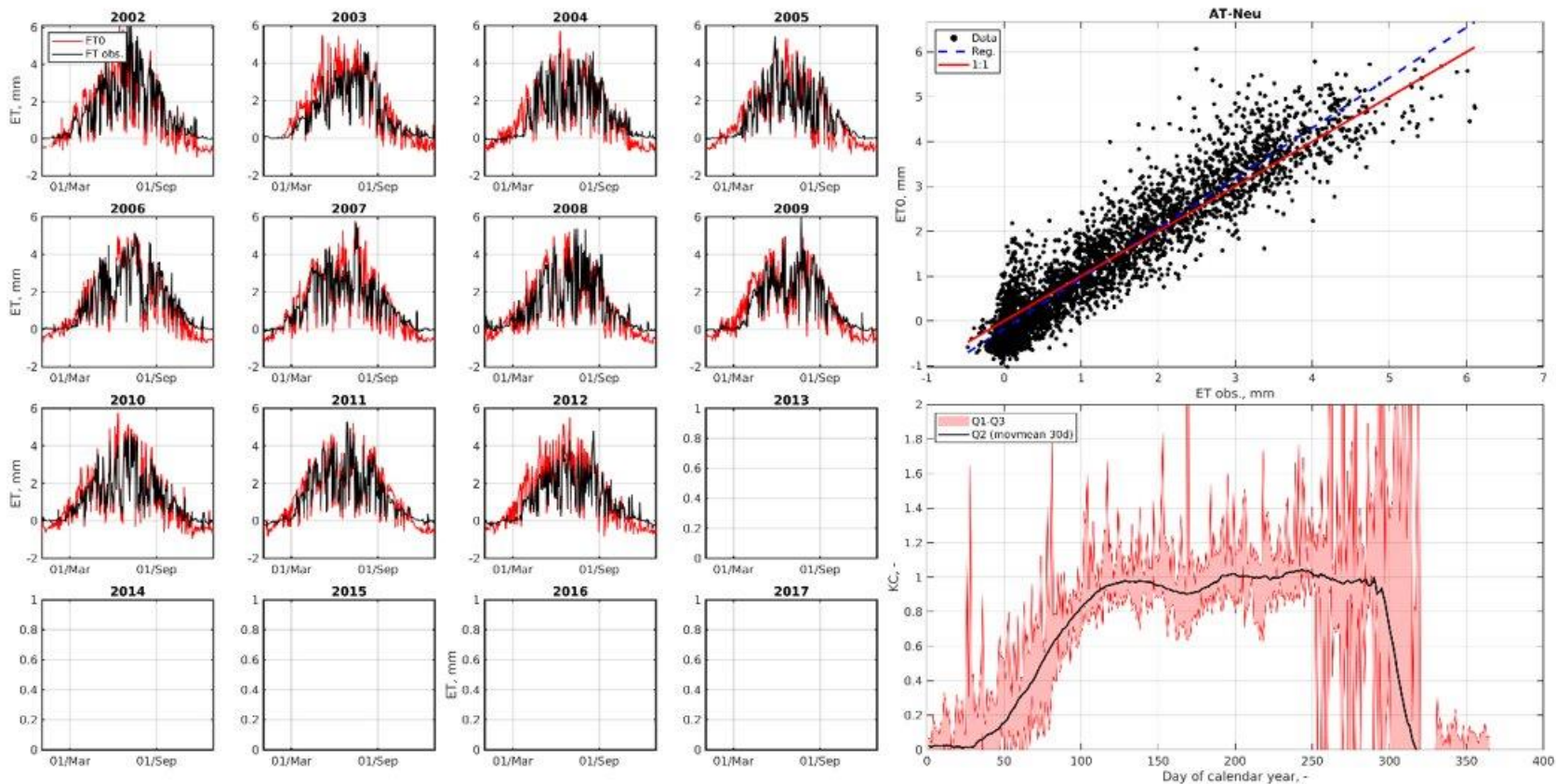


# Metodo FAO56: validazione





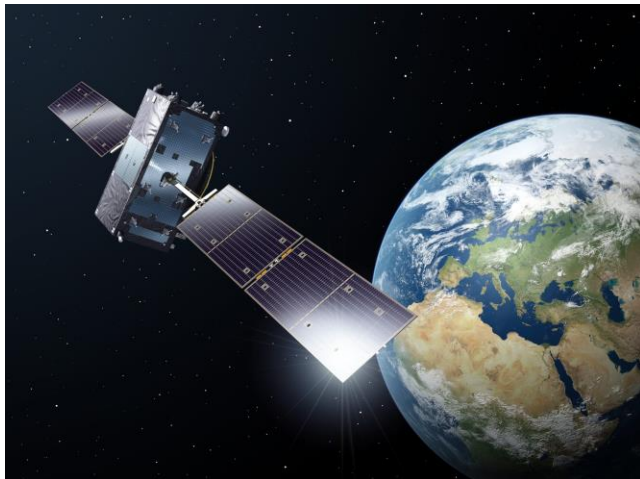
# Metodo FAO56: validazione



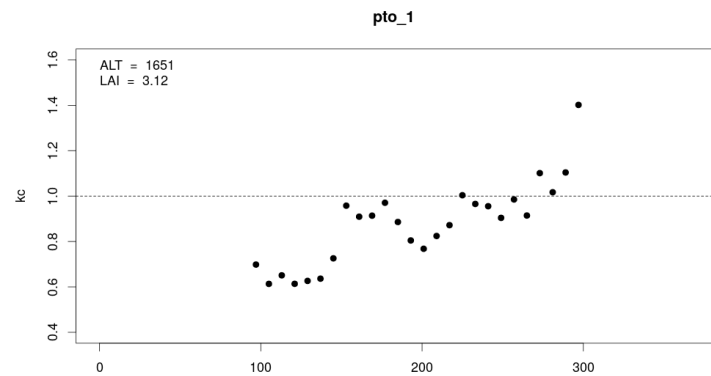
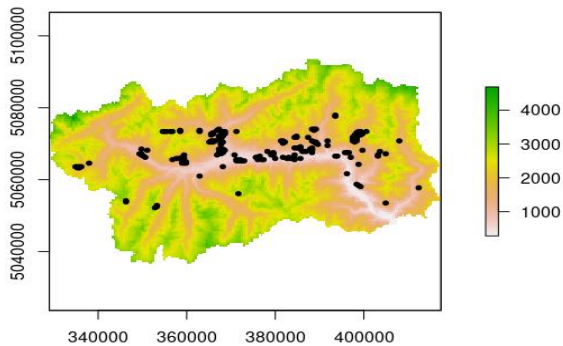


RESERVAQUA

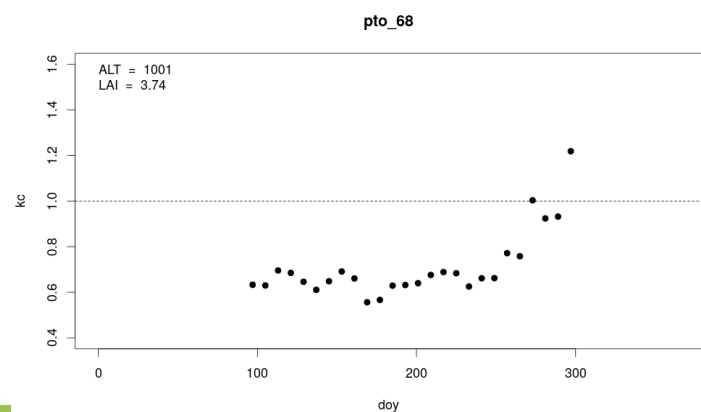
# Metodo FAO56 sat



$$\begin{aligned} Etc &= Kc * ET0 \\ IWR &= P - Etc \end{aligned}$$



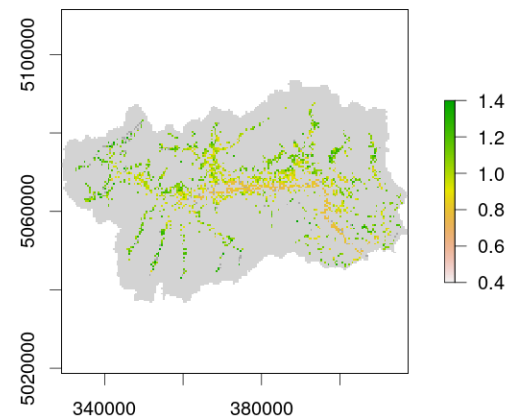
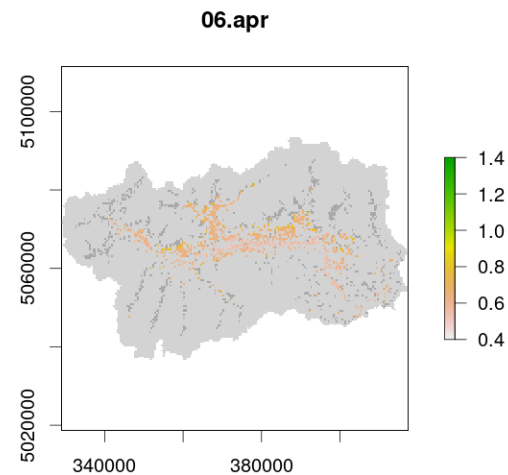
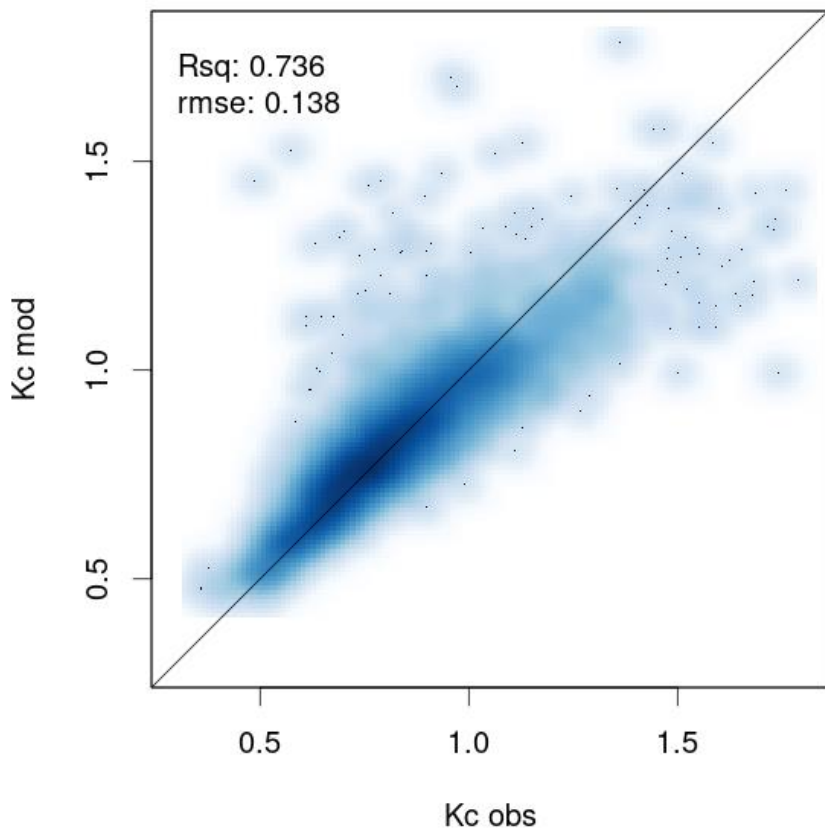
> 1200 m



< 1200 m



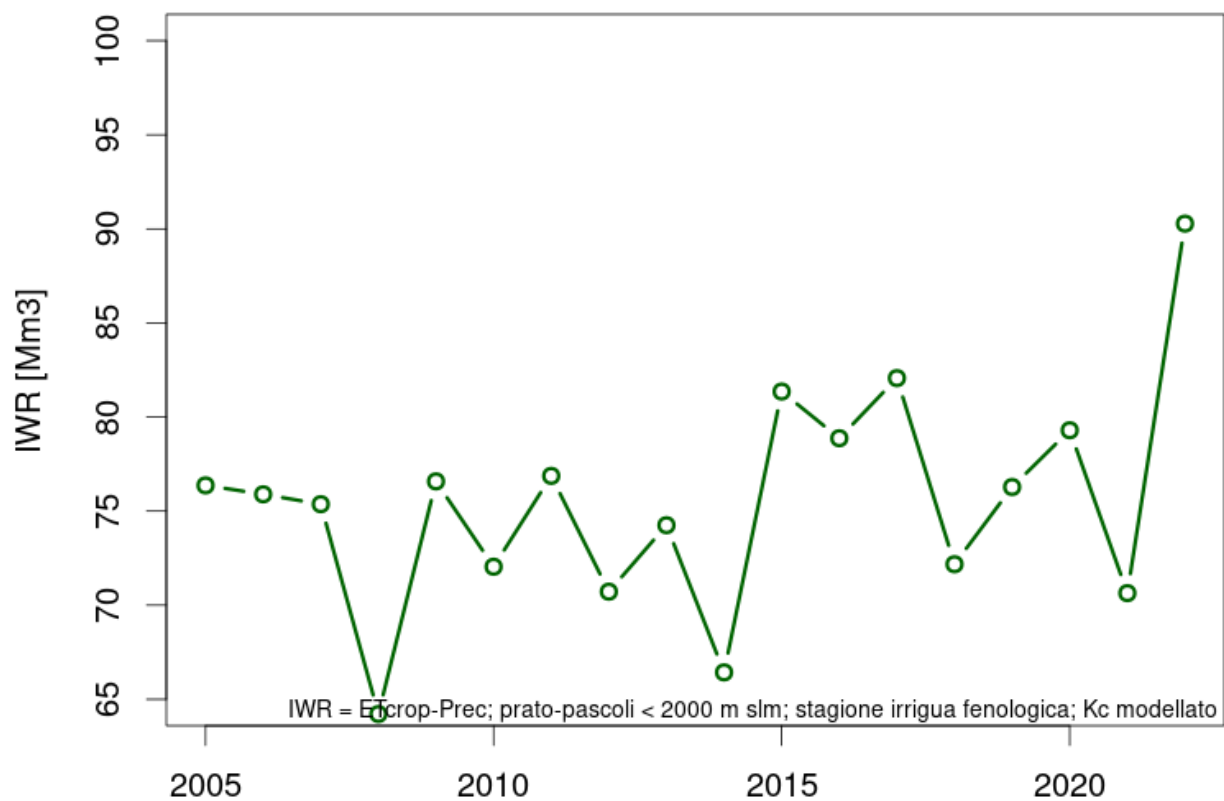
# Metodo FAO56 sat





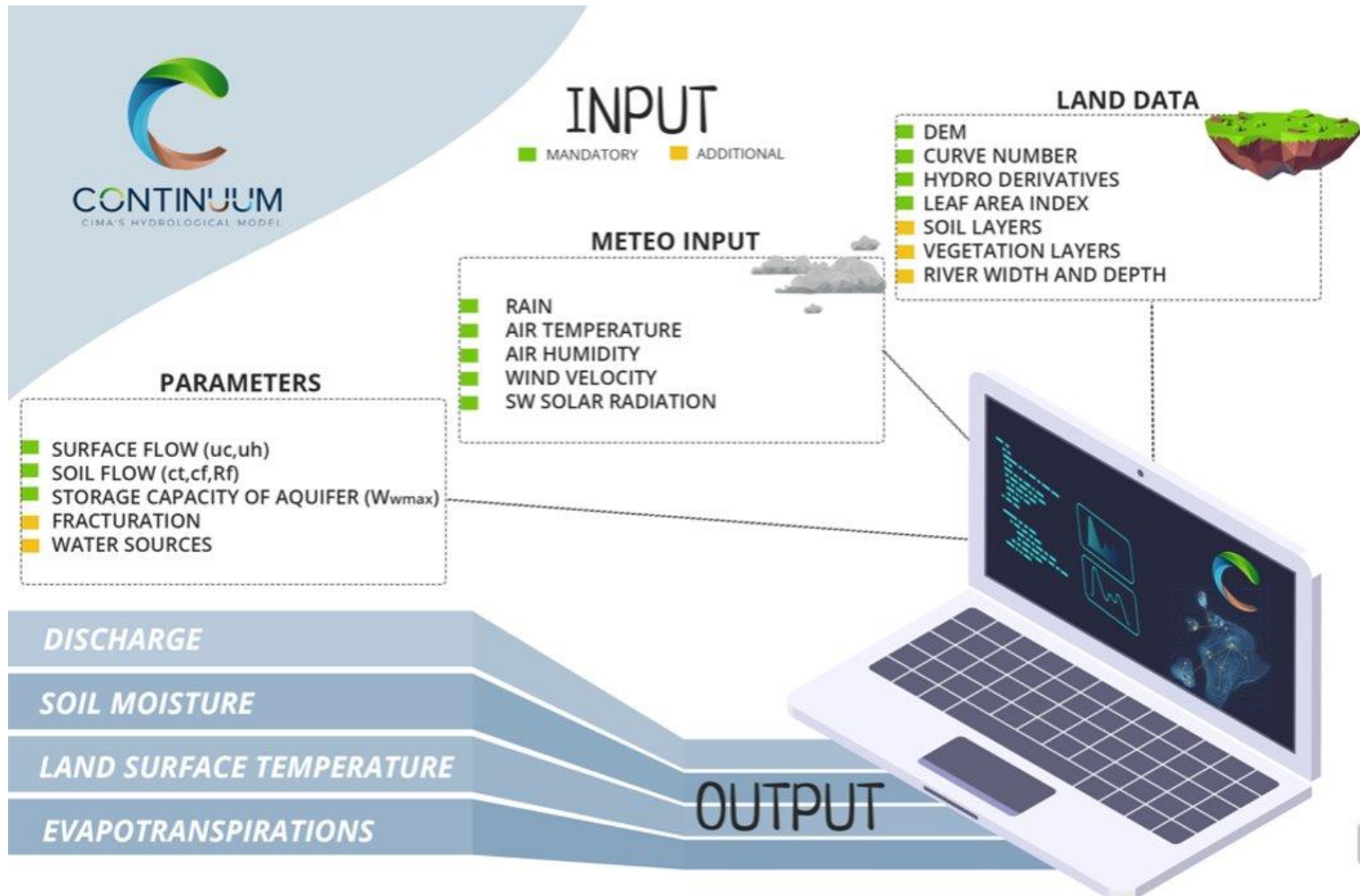
# Metodo FAO56 sat

## Fabbisogno irriguo prato-pascoli VdA

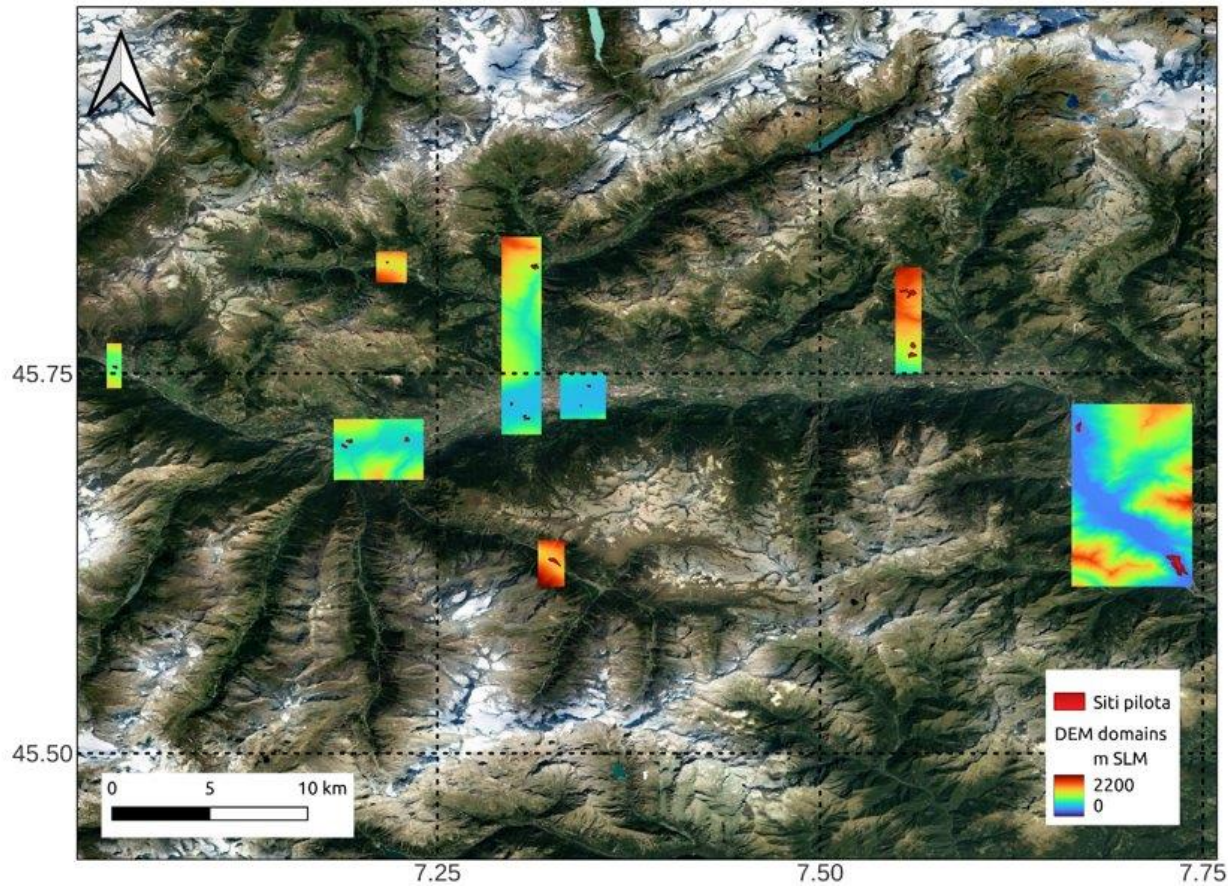




# Metodo modello idro



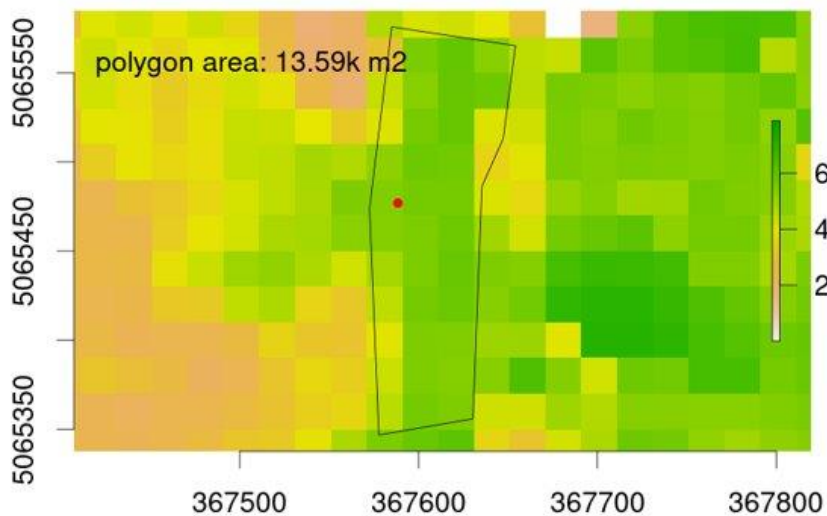
# Metodo modello idro



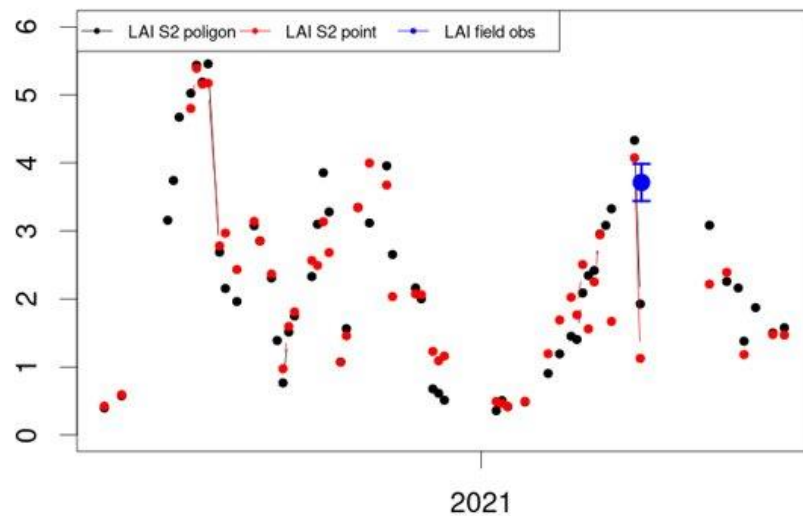


# Metodo modello idro

13-IAR-AO

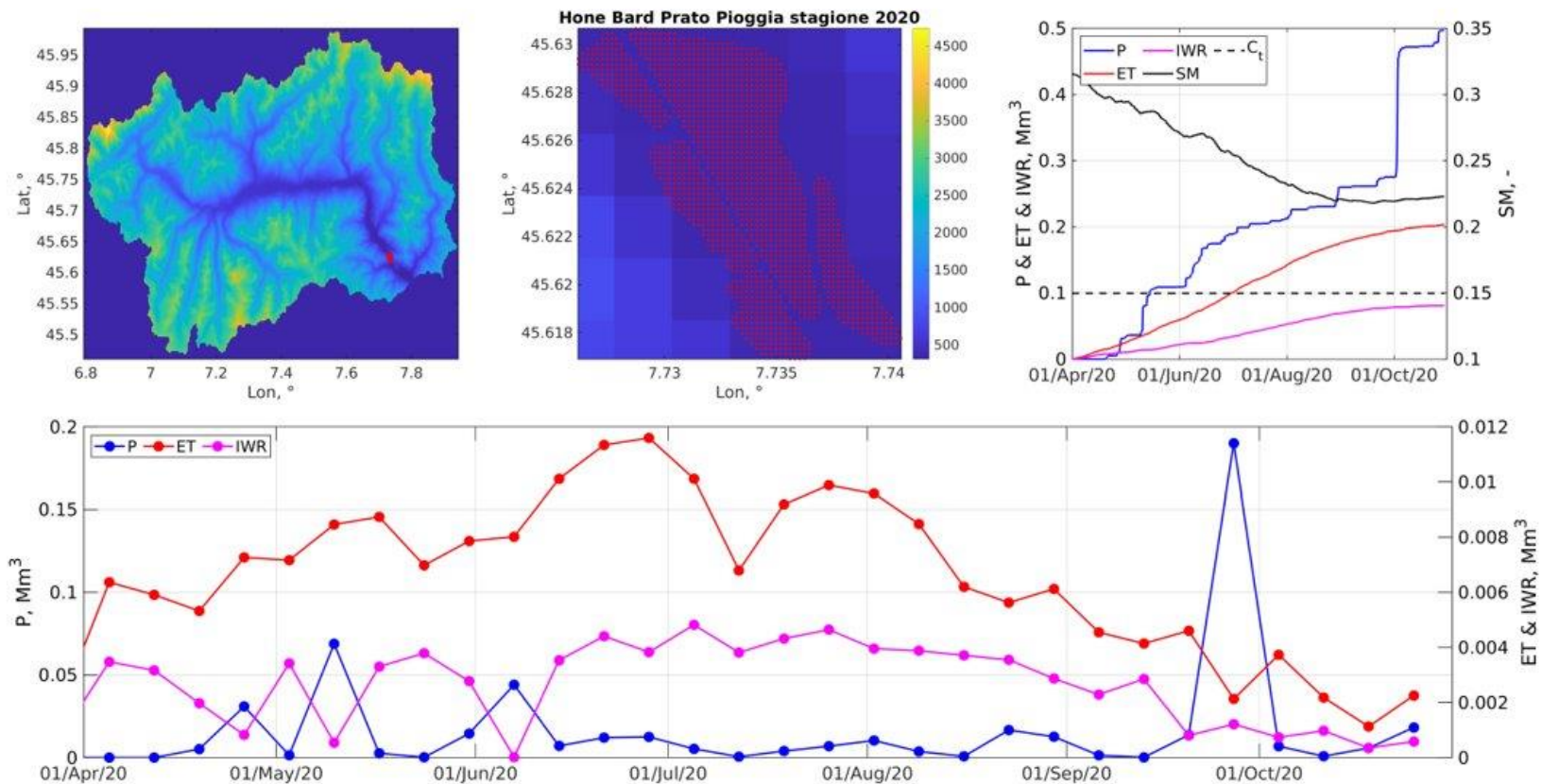


LAI





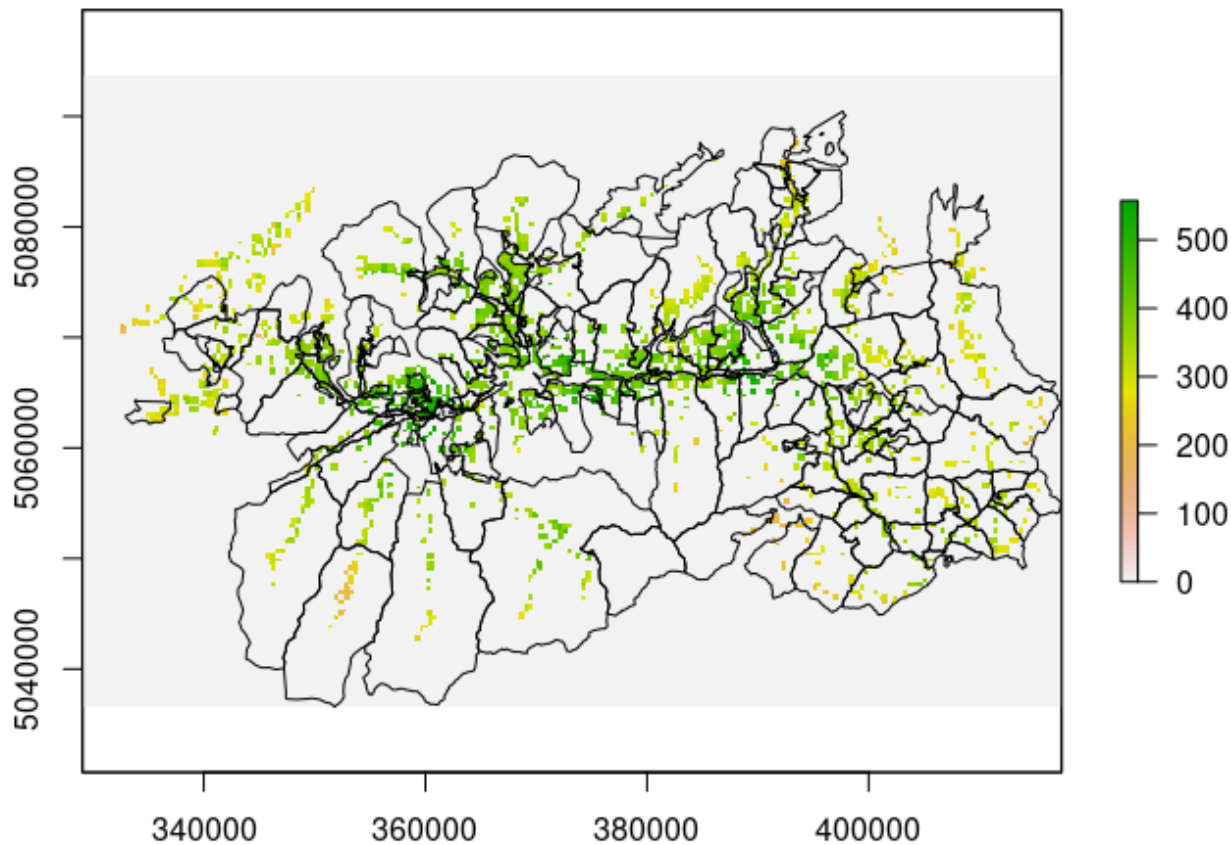
# Metodo modello idro





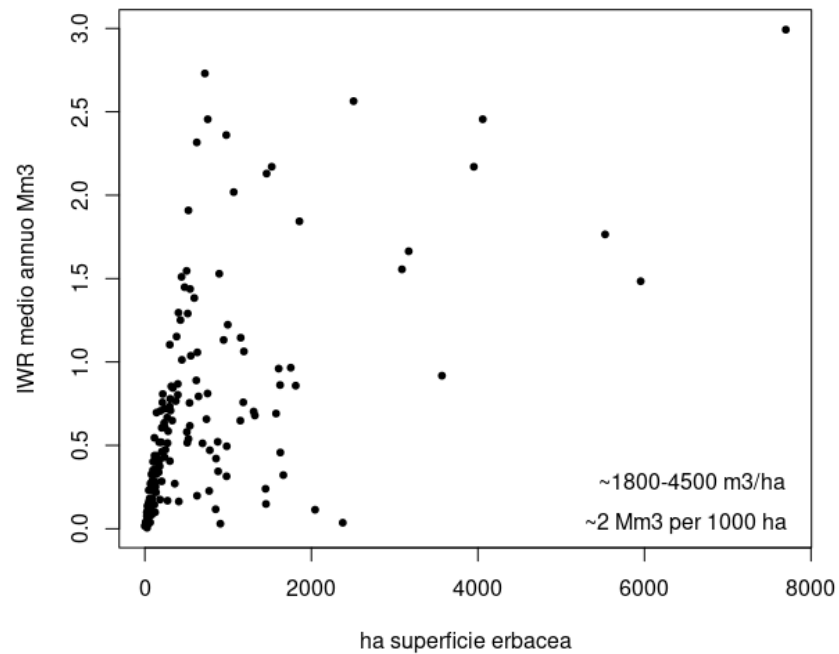
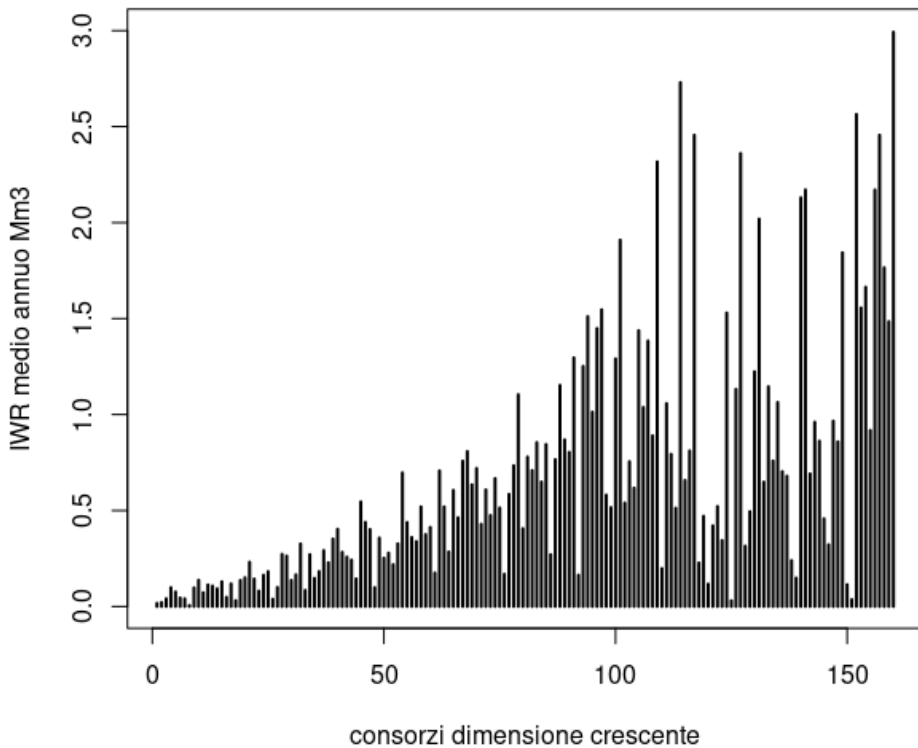
RESERVAQUA

# Confronto ai consorzi





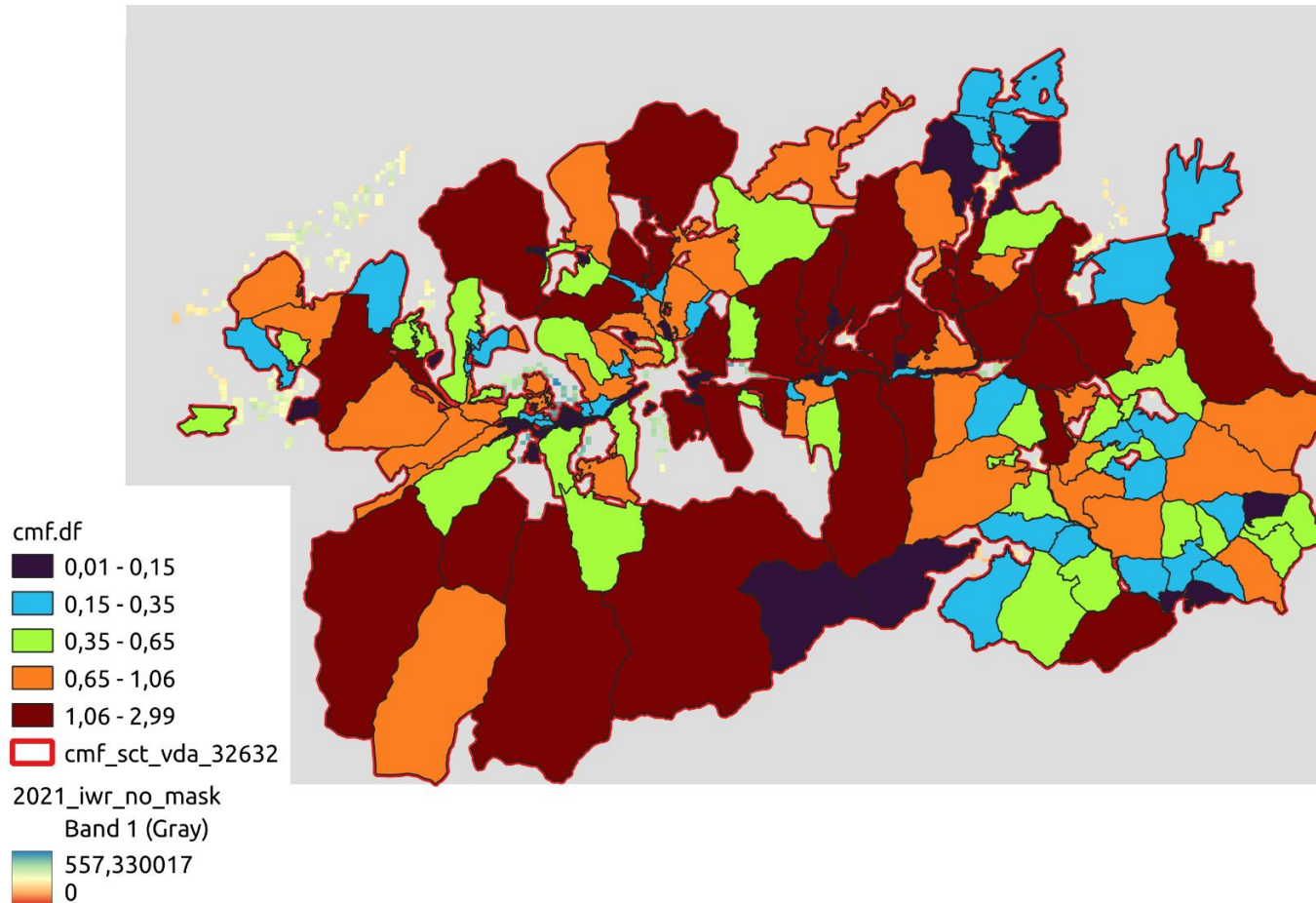
# Confronto ai consorzi





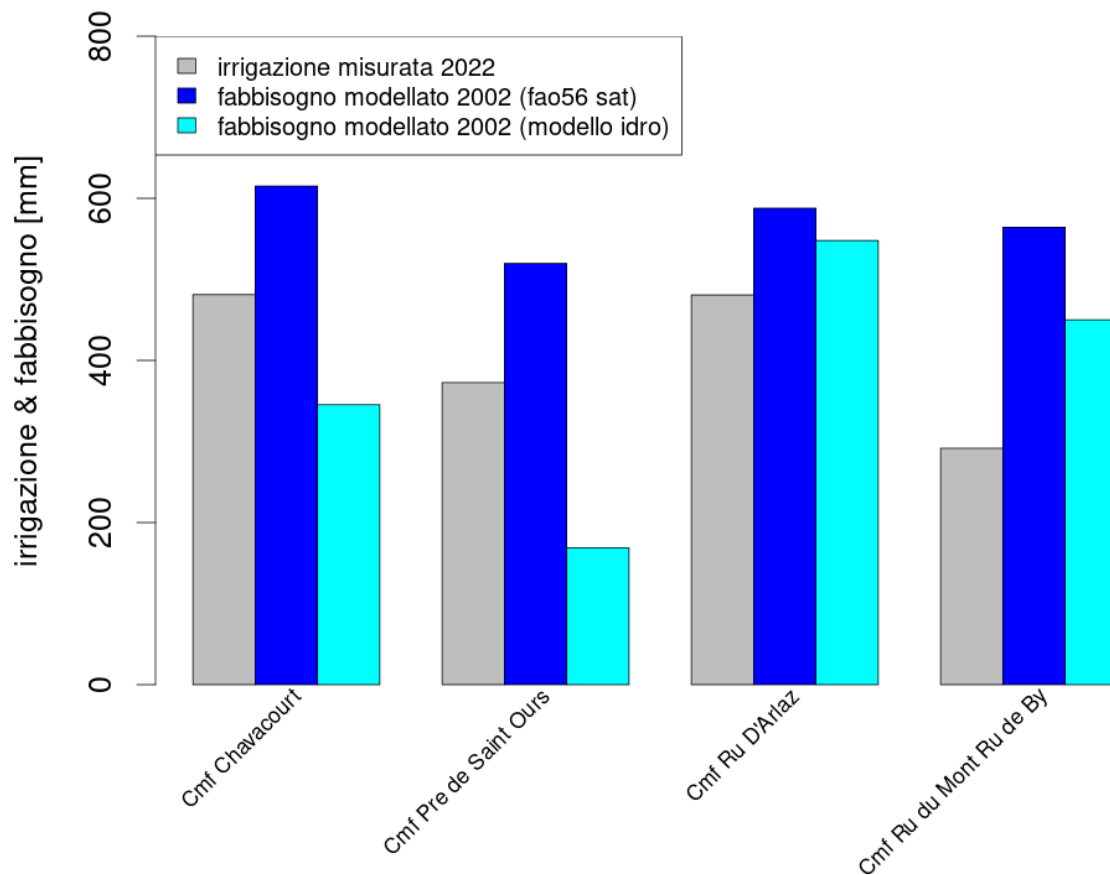
RESERVAQUA

# Confronto ai consorzi





# Confronto ai siti pilota

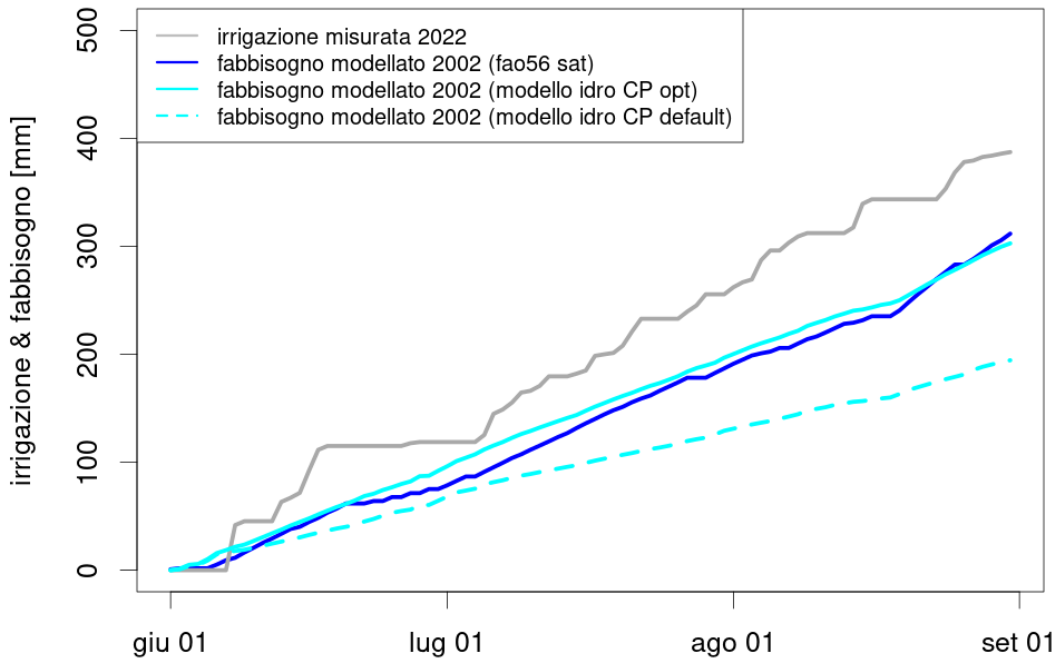




# Confronto ai siti pilota

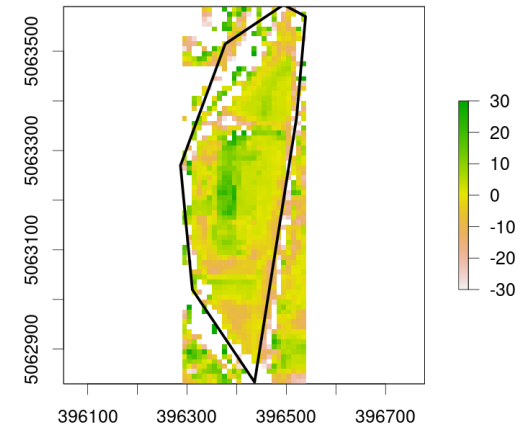
## Ru d Arlaz

IWR modellato con coeff. efficienza aspersione +25%



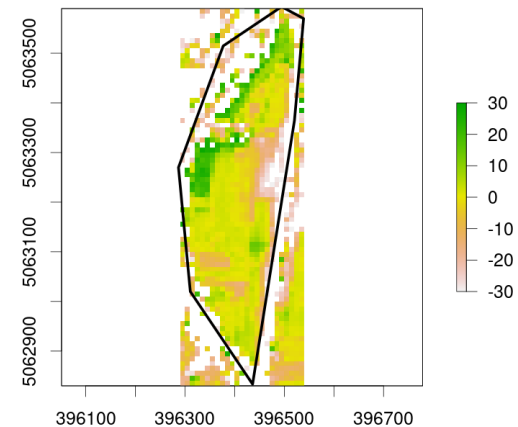
## Variazione produttività Luglio [%]

Cmf Ru Arlaz



## Variazione produttività Agosto [%]

Cmf Ru Arlaz

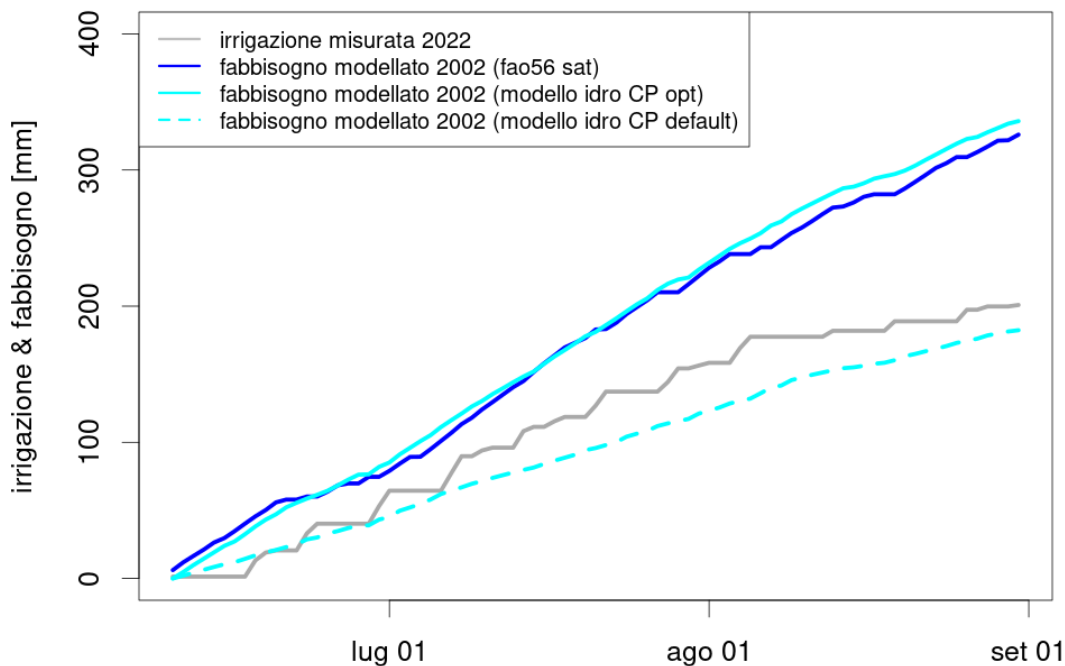




# Confronto ai siti pilota

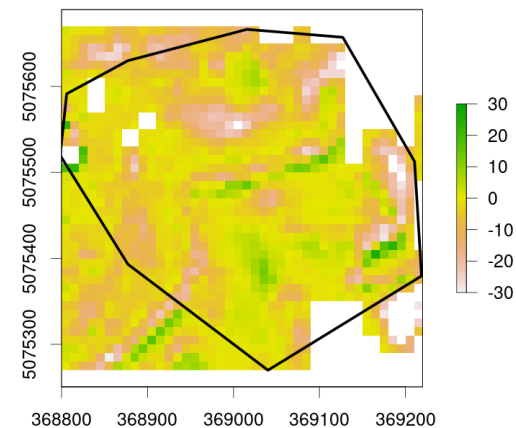
## Cmf Ru du Mont Ru de By

IWR modellato con coeff. efficienza aspersione +25%



## Variazione produttività Luglio [%]

Cmf Ru du Mont Ru de By



## Variazione produttività Agosto [%]

Cmf Ru du Mont Ru de By

